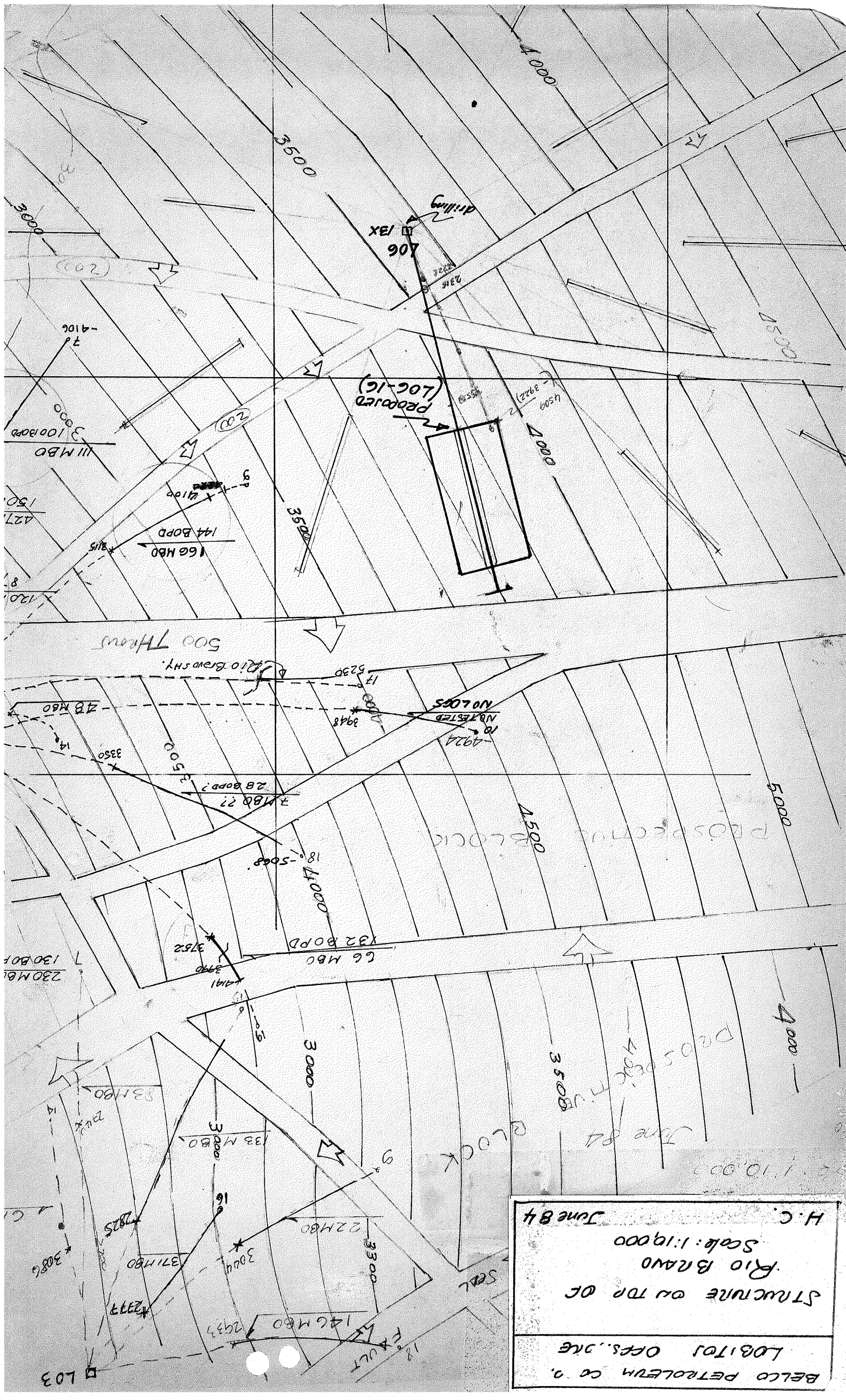


BELCO		GEOLOGIC PROGNOSIS			DISTRIBUTION		
Lobitos Offshore AREA		22A-21-565-CD-L06 OFFICIAL WELL NUMBER		L06-16 BELCONº	TYPE OF WELL Confirmatory	RIG Nº III	
OBJECTIVE		PRIMARY: Rio Bravo SECONDARY: -----					
SURFACE COORDINATES N 9°509,027.66 m, E 459,304.67 m				TARGET COORDINATES N 9°509,545 m, E 459,170 m			
ELEVATIONS	K.B. 50 FT.		DIRECTION OF DEVIATED WELL N 14 ° W		DRILLED DEPTH TO TARGET 4450 FT.		
	<input checked="" type="checkbox"/> WATER DEPTH		(INITIAL) CONDUCTOR ANGLE FROM VERTICAL • Vert. •		TRUE VERTICAL DEPTH TO TARGET 3930 FT.		
	<input type="checkbox"/> GROUND LEVEL 335' FT.		RECOMMENDED DEPTH OF K.Q.P. 1000 FT.		EST. DEVIATION (MAX. ANGLE) 36 °		
	ESTIMATED FINAL DRILLED DEPTH 6700 FT.		BUILD UP ANGLE AT. 4 ° PER 100 FT.		HORIZONTAL DRIFT TO TARGET 1750 FT.		
EST. DRILLING TIME TO T.D. 30 DAYS				HORIZONTAL DRIFT TO TOTAL DEPTH 3100 FT.			
EXPECTED STRATIGRAPHIC SEQUENCE	FORMATION / MEMBER		DRILLED TOP	SUBSEA TOP	OBSERVATIONS / POSSIBLE PROBLEMS		
	Talara		Surface				
	Chacra		2000	1900			
	Rio Bravo		4450	3880	Main target		
	Base iRio Bravo		6400	5400			
	TD.		6700				
CONTROL	TARGET LIMITS	TOP	LEFT 300	RIGHT 300	OBSERVATIONS		
		BASE	300	300			
	BIT SAMPLES TO BE TAKEN:	EVERY 30	FT.FROM SURF TO	2000			AND
		EVERY 10	FT.FROM 2000	TO TOTAL DEPTH			
LOGGING	RECOMMEND.FOR PALEO-PALYNOLOGY Throughout the well						
	RECOMMENDED OPEN HOLE DLL-MSFL-GR, FDC-CNL-GR						
	RECOMMENDED AFTER CASING GR-CCL						
	NEARBY WELLS FOR CORRELATION L06-43X, L04-9						
EVALUATION	SIDEWALL CORES Not considered						
	CONVENTIONAL OR ♦ CCRES None						
	GAS LOGGER None						
	FORMATION TESTING None						
PREPARED BY: H. Cornejo			LIMA PERU		APPROVED <i>[Signature]</i> June 18/84 DATE		
June 18, 1984 DATE							



BELO PETROLEUM CO. 2.
LOBBY OFFS. ONE
STRUCTURE ON TOP OF
Rio Bravo
Scale: 1:19000
H.C.
June 84

BELCO PETROLEUM CORPORATION OF PERU

MEMORANDUM

A: Geology Manager Fecha June 18, 1984
DE: H. Cornejo Asunto WELL L06-16 (Confirmatory)

Purpose of this well is to develop the Rio Bravo sds. north of Platform L06, and downdip of well L04-9.

Data obtained from the first well of Platform L06 (L06-13X) indicates a normal section of Rio Bravo with the top at -3540 s.s. by lithology. This is suggesting a southwest dip, similar to that present around platforms L03, A3 and L04. The dipmeter log will confirm the above statement.


H. Cornejo
Geologist

HC/ghp.

BELCO PETROLEUM CORPORATION OF PERU

M E M O R A N D U M

A: GEOLOGY MANAGER

Fecha June 18th, 1984

DE: CHIEF RESERVOIR ENGINEER

Asunto WELL L06-16

This is the second well from L06 and as such still has a confirmatory character. It is a double spacing offset from L04-9.

Logging program and target size are within the guidelines specification for the first well in an undrilled quadrant.

Reservoir concurs with the locations as proposed.


Jesús Castillo S.
Chief Reservoir Engineer

JCS/rmr.