

<div><div>BELCO</div><div>GEOLOGIC PROGNOSIS</div></div>		DISTRIBUTION									
Lobitos Offshore AREA		Z2A-21-615-D-L06 OFFICIAL WELL NUMBER	L06-3 BELCON ^o	TYPE OF WELL	Development	RIG N ^o	III				
OBJECTIVE		PRIMARY: Rio Bravo (Mid Mass. ss) SECONDARY: -----									
SURFACE COORDINATES				TARGET COORDINATES							
N 9'509,021.99 1'598,627.09		m, E 459,304.05 124,654.85		m		N 9'509,350 1'598,940		m, E 459,790 125,170		m	
ELEVATIONS	K.B. 50 FT.		DIRECTION OF DEVIATED WELL		N 57 ° E		DRILLED DEPTH TO TARGET		3900 FT.		
	<input checked="" type="checkbox"/> WATER DEPTH		(INITIAL) CONDUCTOR ANGLE FROM VERTICAL		15 °		TRUE VERTICAL DEPTH TO TARGET		3340 FT.		
	<input type="checkbox"/> GROUND LEVEL - 335 FT.		RECOMMENDED DEPTH OF K.O.P.		700 FT.		EST. DEVIATION (MAX. ANGLE)		36 °		
ESTIMATED FINAL DRILLED DEPTH		5850 FT.		BUILD UP ANGLE AT.		3 ° PER 100 FT.		HORIZONTAL DRIFT TO TARGET		1950 FT.	
EST. DRILLING TIME TO T.D.		22 DAYS						HORIZONTAL DRIFT TO TOTAL DEPTH		3106 FT.	
EXPECTED STRATIGRAPHIC SEQUENCE	FORMATION / MEMBER		DRILLED TOP		SUBSEA TOP		OBSERVATIONS / POSSIBLE PROBLEMS				
	Talara		At Surface								
	Chacra		2650		2250						
	Rio Bravo Sdy.		3900		3290						
	Middle Massive Sands		4450		3700		Pay Zone				
	Rio Bravo Shly		5650		4700						
	TD.		5850		4900						
CONTROL	TARGET LIMITS		TOP		LEFT 150 RIGHT 150		OBSERVATIONS				
			BASE		200 200						
	BIT SAMPLES TO BE TAKEN:		EVERY 30 FT. FROM SURF TO		2000 AND						
		EVERY 10 FT. FROM		2000 TO TOTAL DEPTH							
RECOMMEND. FOR PALEO-PALYNOLOGY		From 2000'									
LOGGING	RECOMMENDED OPEN HOLE		IEL-GR								
	RECOMMENDED AFTER CASING		GR-CCL								
	NEARBY WELLS FOR CORRELATION		L04-7, L04-13, L04-9, L06-24, L06-18.								
EVALUATION	SIDEWALL CORES		Not considered								
	CONVENTIONAL OR \diamond CORES		None								
	GAS LOGGER		None								
	FORMATION TESTING		None								
PREPARED BY:		Mario Chávez		LIMA PERU		APPROVED		March 13/85			
		March 11, 1985		DATE				DATE			

SW

SEA LEVEL

LOG

N57°E

NE

SEA BOTTOM

TALARA

TALARA

TALARA

TALARA

CHACRA

CHACRA

CHACRA

CC.

Rio BRAVO SDY
UPPER SECTION

MID MASSIVE SDS.

Rio BRAVO SDY

(LOWER SECTION)

Rio BRAVO SHALY

22

PALEGREDA

R.B.
SDY
(UPP.)M.MASS.
SDS.R.B.
SDY

(LWR.)

Rio BRAVO
SHALY

13x

Rio B. SDY.
(UPP. SECT.)MID MASS.
SDS.

PALEGREDA

R.B.
SDY.
(LWR.)PROPOSED WELL
LOG-3Rio BRAVO SDY.
(UPPER SECT.)

MID MASSIVE SDS.

Rio BRAVO SDY
(LOWER SECTION)

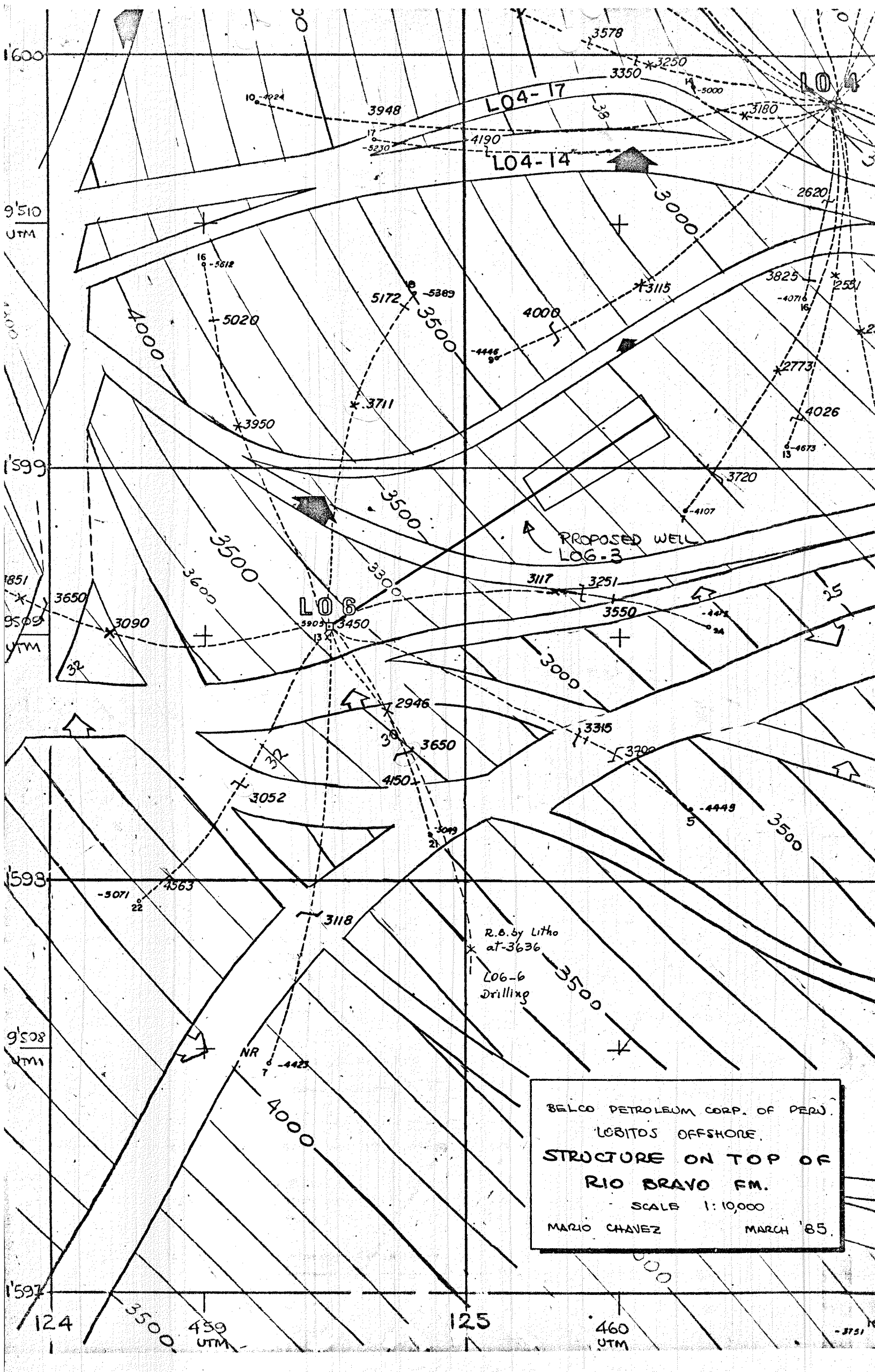
Rio BRAVO SHALY.

BELCO PETROLEUM CORP. OF PERU
LOBITOS OFFSHORESW-NE STRUCTURAL CROSS SECTION
FOR PROPOSED WELL
22A-21-615-D-LOG (LOG-3)

SCALE 1:10,000

MARIO CHAVEZ

MARCH 1985



BELCO PETROLEUM CORP. OF PERU.
LOBITOS OFFSHORE.
STRUCTURE ON TOP OF
RIO BRAVO FM.
SCALE 1:10,000
MARIO CHAVEZ MARCH '85.

BELCO PETROLEUM CORPORATION OF PERU

M E M O R A N D U M

A: GEOLOGY MANAGER

Fecha March 13, 1985


DE: CHIEF RESERVOIR ENGINEER

Asunto WELL L06-3

Subject well is a down dip location in a reservoir presently exploited from L04 platform. Therefore, depletion is not an unexpected outcome. The location is required for proper drainage of the reserves in the block as well as for future secondary recovery operations.

Logging program and target size are in agreement with the guidelines for a single spacing (infill well).

Reservoir concurs with the location.


Jesús Castillo S.
Chief Reservoir Engineer

JCS/rmr.

BELCO PETROLEUM CORPORATION OF PERU
M E M O R A N D U M

A: Geology Manager

Fecha March 11, 1985

DE: Mario Chávez

Asunto Geological Comments

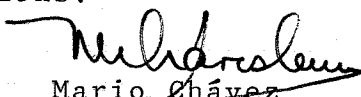
Well L06-3

Reference well is proposed in order to drill the Mid Massive sds. of the Rio Bravo Fm. in a block of approximately 210 acres.

Present well is located downdip and towards SW of wells L04-7, L04-13 and towards North of well L06-24.

The target limits are critical in order to keep spacing with neighboring wells.

Logging program only includes the IES-GR according to the guide lines for infill locations.


Mario Chávez
Area Geologist

MCH/ghp.