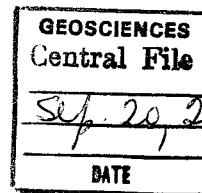




FINAL GEOLOGICAL REPORT

**WELL: Z-2B- 24 – 081 – D - LO6
LO6-23**



1. Summary:

The well LO6-23, spudded on April 24, 2001, it was drilled from Platform LO6 in the Lobitos area, with an average azimuth of N 226 degrees. The well was stopped at final total depth of 9040' MD (-8282' VSS) in Lower Basal Salina on June 6, 2001.

The main objective Upper Basal Salina was reached at 7902' MD, (-7284'SS); 4' lower than the expected top by prognosis, with fair to good oil shows and gas readings. The measured gross thickness of 176' (157' TVD), and a vertical net sand thickness of 114 feet.

The Lower Basal Salina was encountered at 8445' MD, (-7926' VSS); 276' lower than prognosis, without economic sands.

The well LO6-23 was completed in Upper Basal Salina, setting 5 1/2" casing at 8275 feet with an initial production (IPR) of **788 BO x 47 BW x 640 psi x 1049 GOR.**

The Mogollon Formation was reached at 5869' MD (-5490' VSS) showing fair oil shows, with a vertical net sand thickness of 99 feet. These sands will be considered as a future workover.

2. - Stratigraphy:

According ditch samples and electrical logs, the formational tops are as follows:

	Prognosis		Final Tops		relate to prognosis
	MD	VSS.	MD	VSS.	
Talara	At sea	Bottom	At sea	Bottom	
Chacra	2300	-2200	2490	-2376	176 ft. lower
Rio Bravo	3900	-3700	3592	-3359	341 ft. higher
Palegreda	5100	-4750	5146	-4804	54 ft. lower
Mogollon	5800	-5400	5869	-5490	90 ft. lower
San Cristobal	6350	-5900	6340	-5892	8 ft. higher
Upper Basal Salina	7850	-7280	7902	-7284	4 ft. lower
Lower Basal Salina	8250	-7650	8445	-7926	276 ft. lower
Balcones	8500	-7850	-----	-----	Not reached
TD.	8700	-8050	9040	-8282	232 ft. lower

Based on Power Log, the Petrophysical parameters are:

Formation	Gross Sect MD (VD)	Net Sand MD (VD)	Net Pay MD (VD)	Average porosity	Average Sw	Average Vclay
Mogollón	471 (423)	145(131)	110 (99)	8.7	42.0	16.0
Upper Basal Salina	176 (157)	117(104)	46 (41)	10.7	52.1	15.7
Lower Basal Salina	595 (539)	19(17)	15 (13)	8.5	45.0	32.8

CENTRAL FILE

3. - Structure

Basal Salina formation

The Upper Basal Salina was encountered in an isolated block reservoir of approximately 63 acres, in the downthrown side of the major North- South dipping towards west normal fault.

The Lower Basal Salina drilled was shaly out, and could correspond to the lateral margin of the channels.

4. - Production data

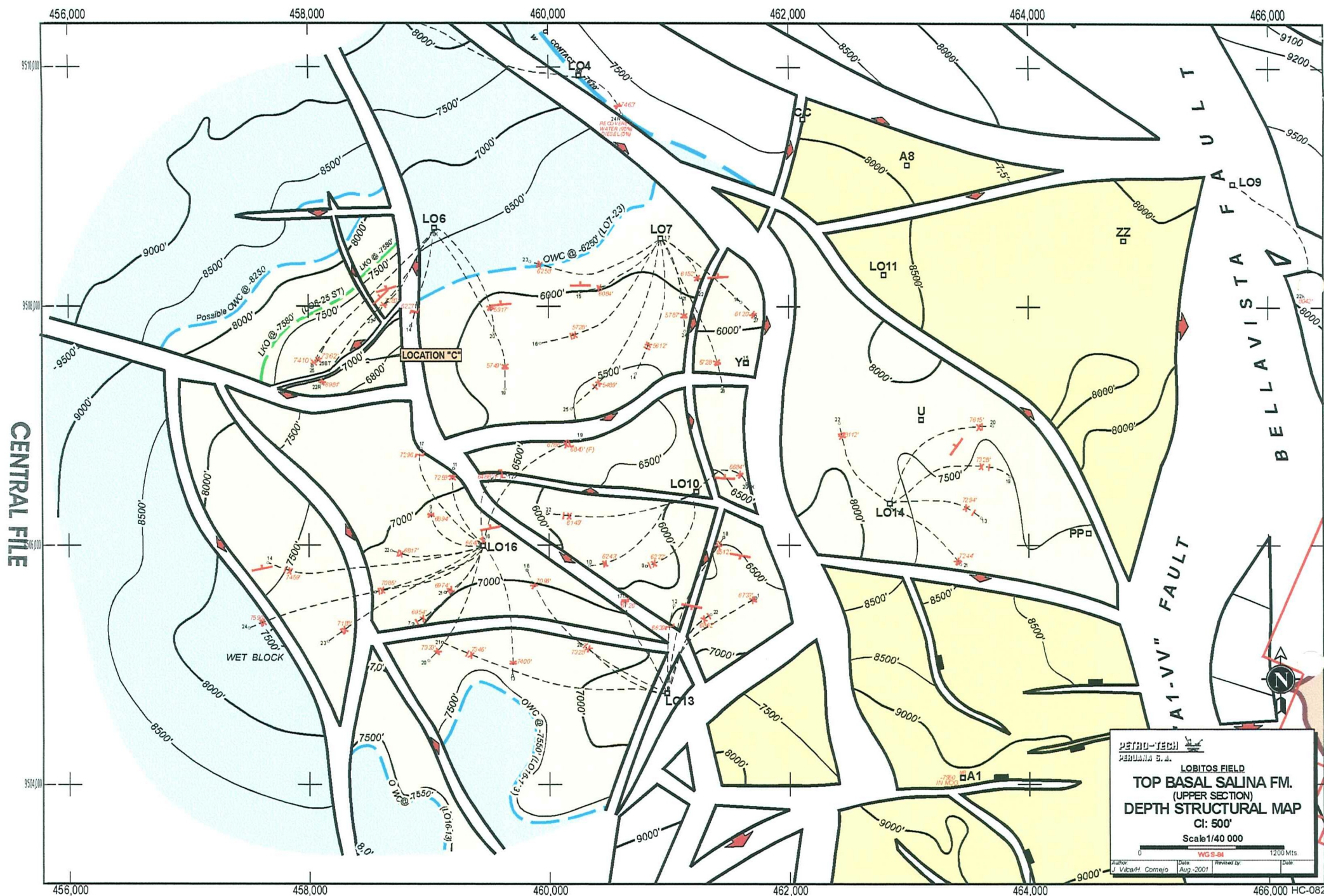
According to Power Log this well had 41 feet of vertical net oil sands, however, these oil sands are interbedded with high water saturations sands, therefore the water cut is about of 80 %.

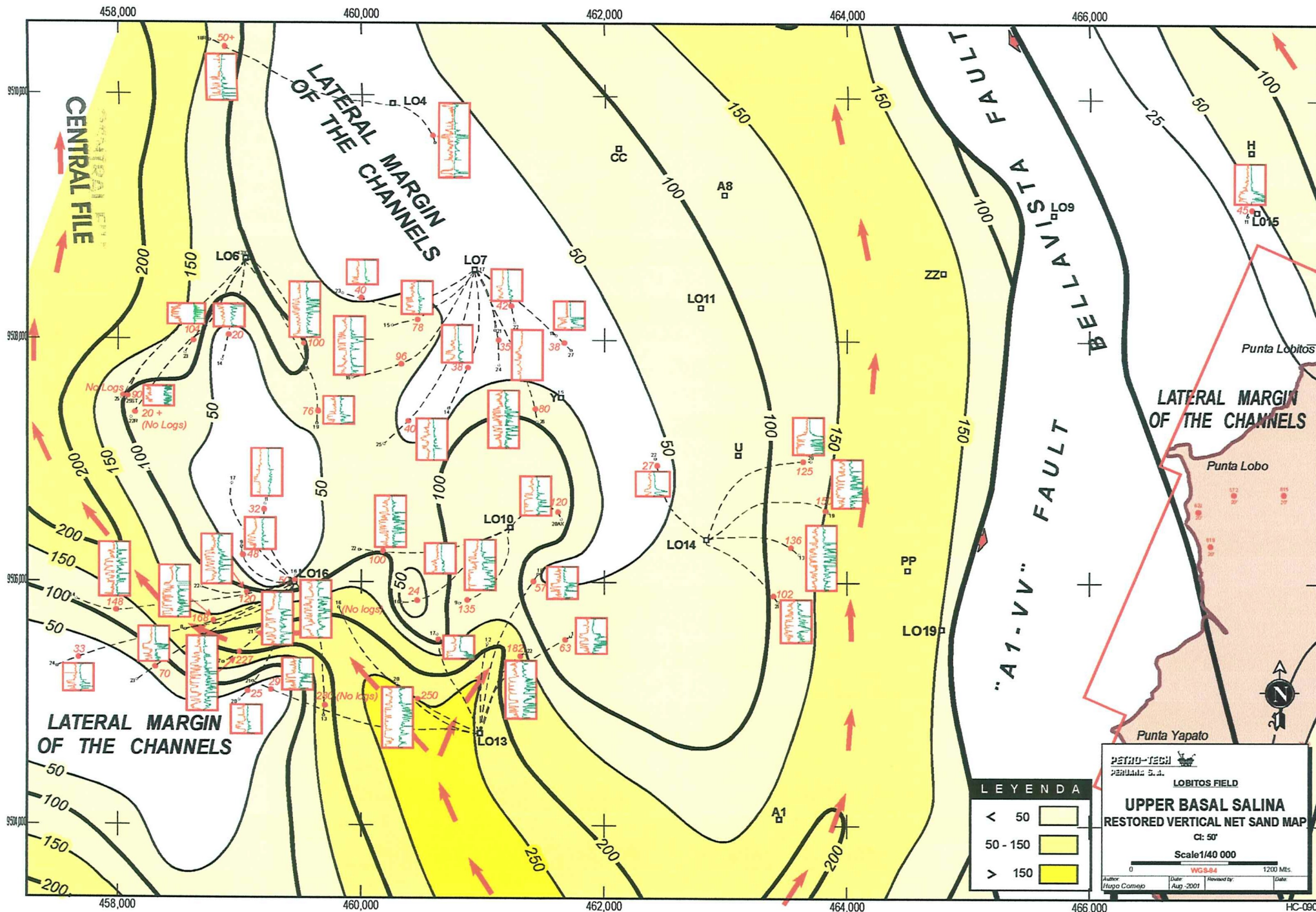
A summary of production is as follows:

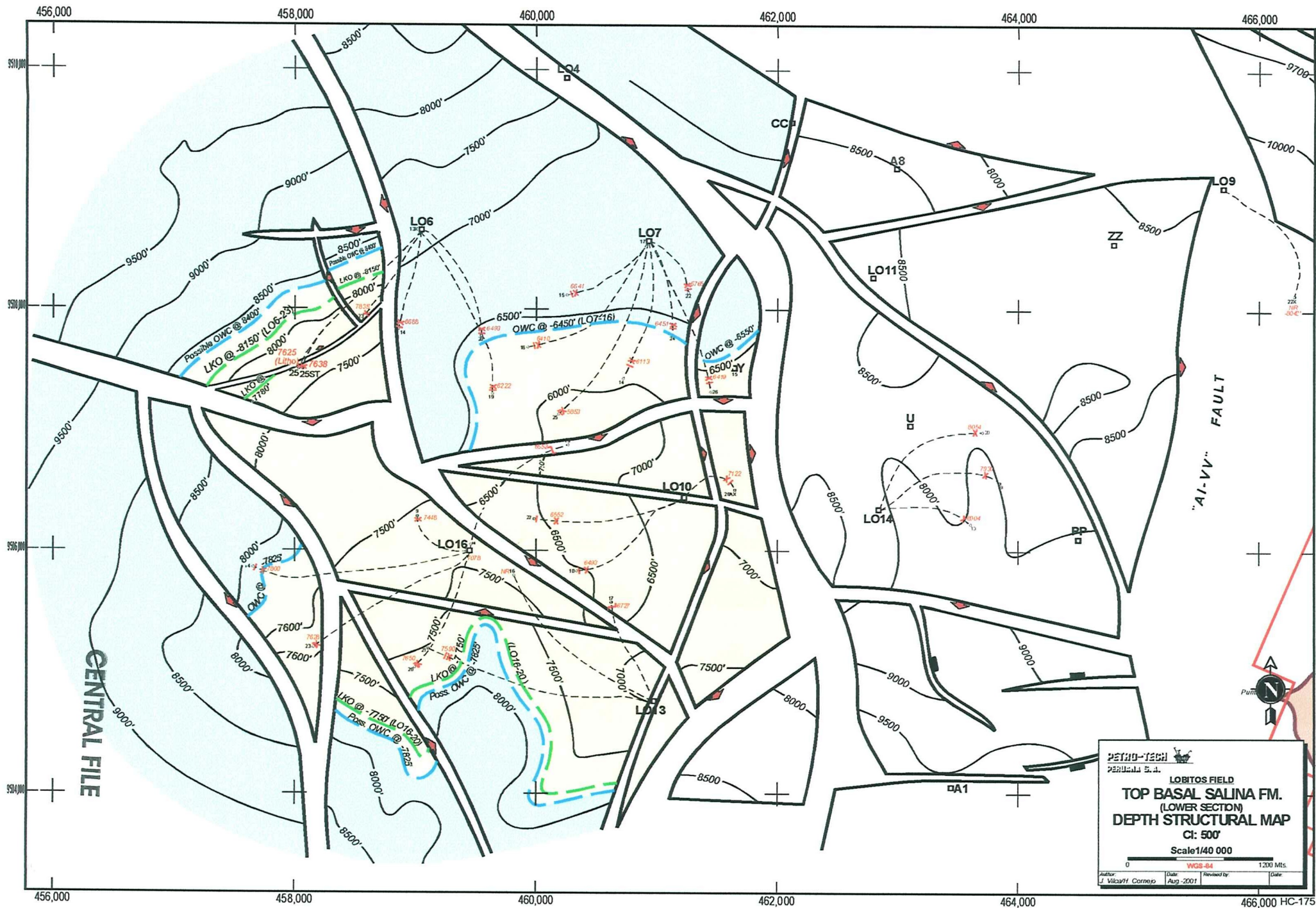
<i>Bbls. Oil</i>	<i>Bbls. Water</i>	<i>Choke</i>	<i>Pressure</i>	<i>Date</i>
788	47	3/8"	1049	06/14/01
385	205	3/8"	784	06/15/01
57	208	2"		06/26/01
36	129	2"	3461	07/03/01
23	83	2"		07/25/01

Hugo Cornejo/ Mario Chavez

September 2001

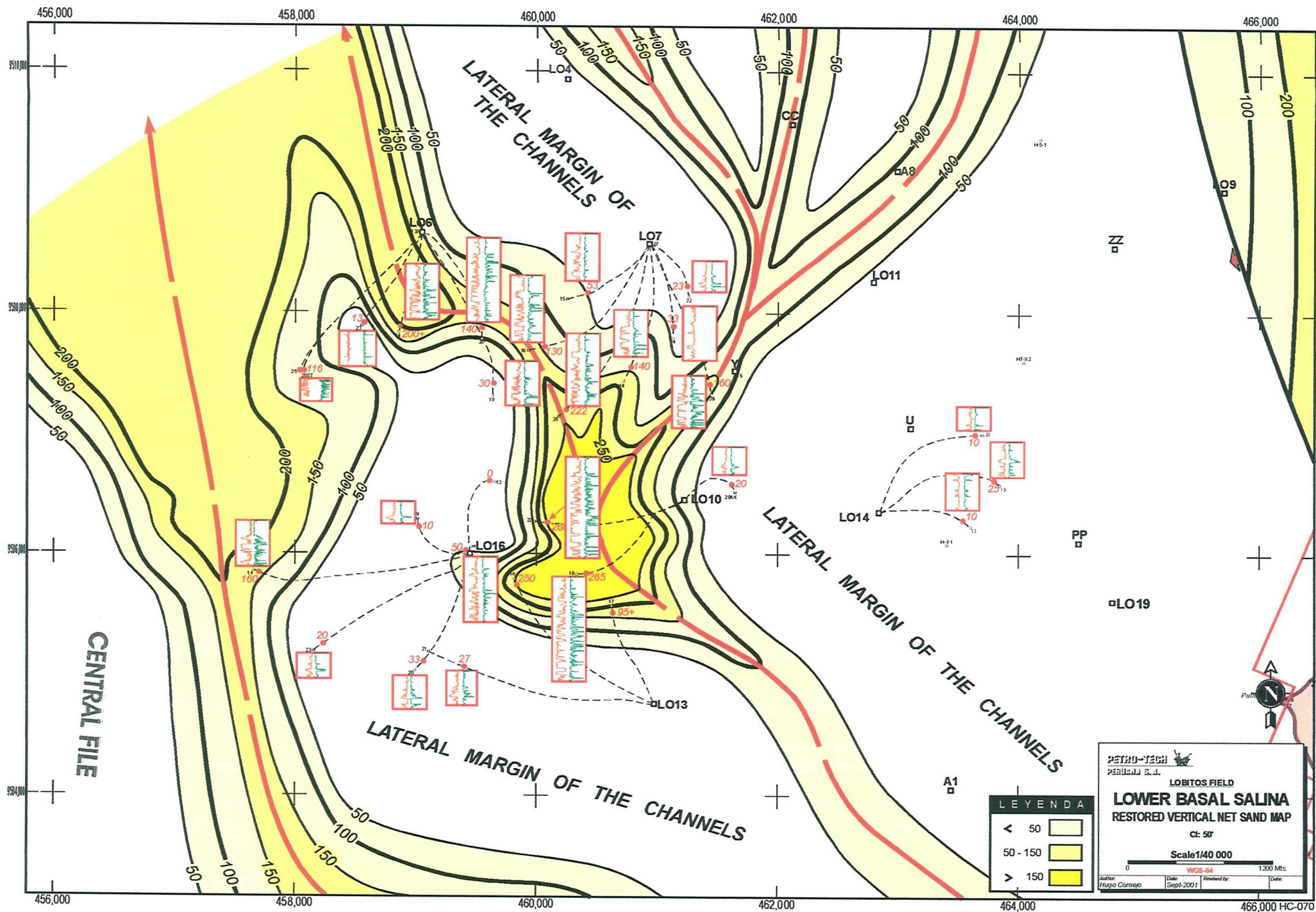






Point

466,000 HC-175



PETRO-TECH
PERU S.A.

LOBITOS FIELD

LOWER BASAL SALINA

RESTORED VERTICAL NET SAND MAP

Ci: 50'

Scale 1/40 000

0 1200 Mts.

WGS-84

Author: Hugo Cornejo Date: Sept 2001

Reviewed by: Date:

LEYENDA	
< 50	
50 - 150	
> 150	



CENTRAL FILE

