

WELL: LO16-31D

PALYNOLOGICAL ANALYSIS

DEPTH: 9940'

ZONE: VI with V reworked zone

PROCESSING:

Reaction of the sample to acids:

- Chlorhydric acid: Moderate
- Fluorhydric acid: Strong
- Flotation: Double time

FINDINGS:

Chart 1. Palynomorphs content

PHOTO	MICRO SPECIE	QUANTITY	PERCENTAGE
1-A	<i>Diporites sp 1</i>	6	38
1-B	<i>Apiculatisporites sp</i>	6	38
1-C	<i>Diporites sp 2</i>	2	13
1-D	<i>Bombacacidites sp 11</i>	1	6
1-E	<i>Polipodaceosporites sp 4</i>	1	6
2-A	Fungi	-	-
2-B	Fungi	-	-
3	Algae remains	-	-
4	Organic matter	-	-

DESCRIPTION

I have recognized 5 micro species and 16 palynomorphs.

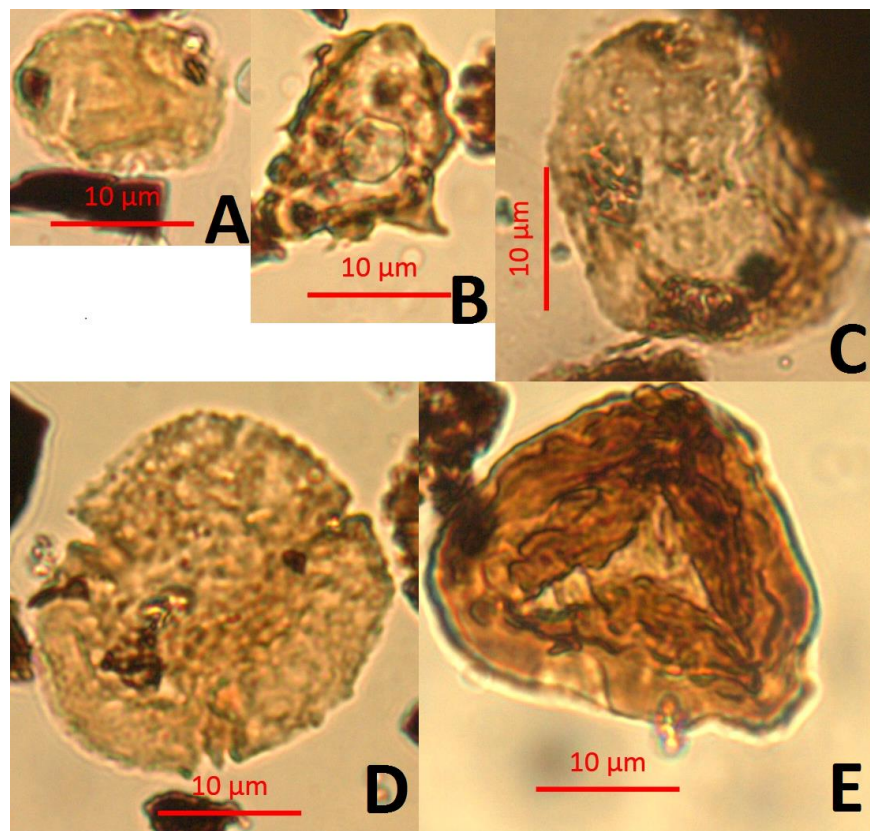
DISCUSSION:

As I show in char 1, I have seen 16 palynomorphs, some of them are in zone VI & V.

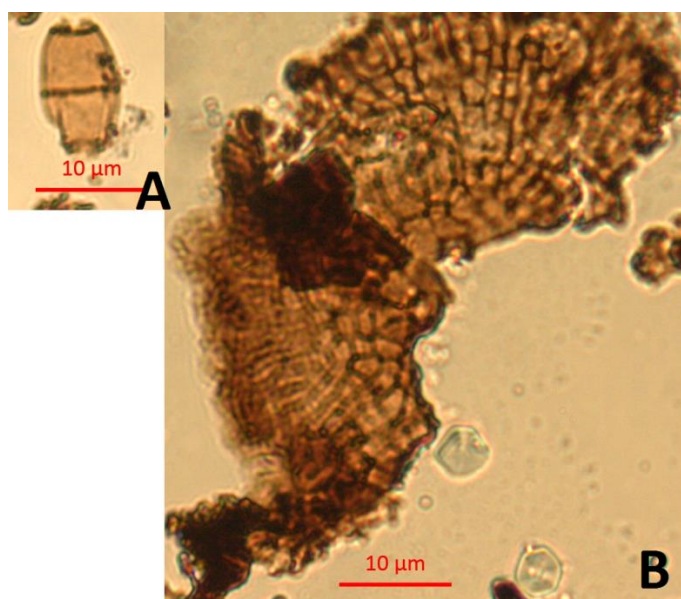
RESULTS:

This interval is in VI with V reworked zone.

WELL: LO16-31D

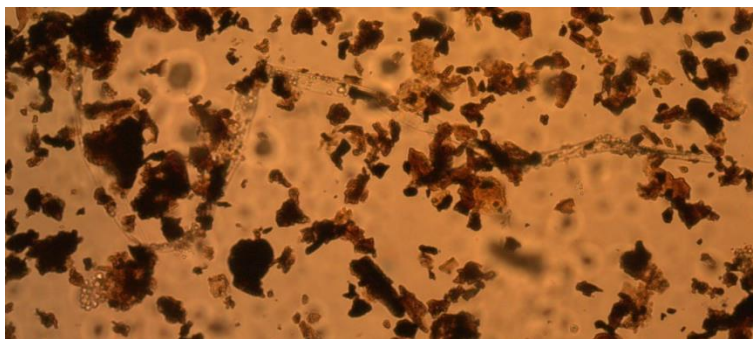


PICTURE 1. Palynomorphs

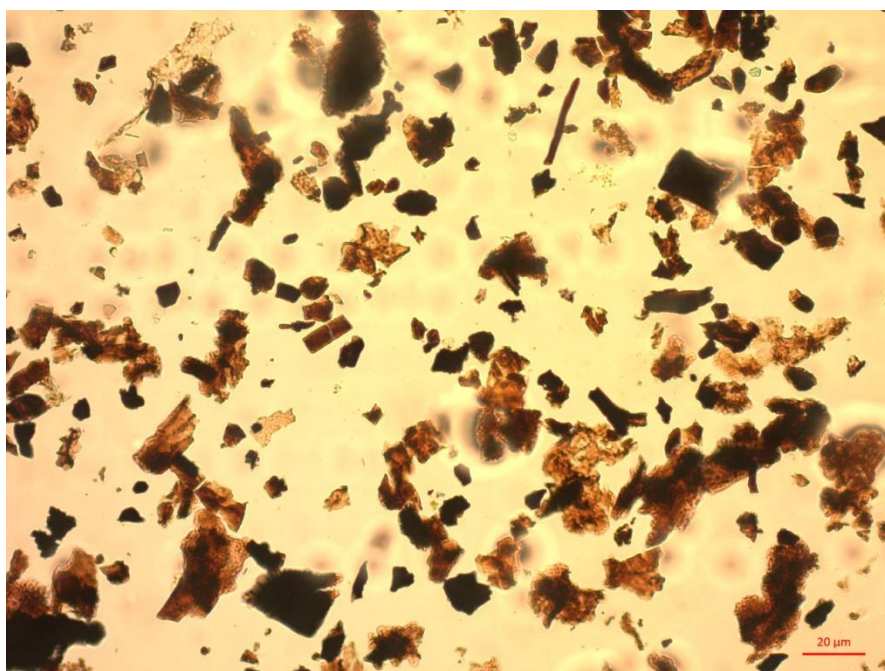


PICTURE 2. Fungi

WELL: LO16-31D



PICTURE 3. Algae remains



PICTURE 4. Organic Matter

WELL: LO16-31D



CHART 6. Hystogram



PALINOLOGICAL LABORATORY
SEET CONTROL
HISTOGRAM

WELL: LO16-31D MADE BY: Ing Dana Gutierrez			<div>Tetracolporopollenites sp</div> <div>Diporites sp 2</div> <div>Syncolpites sp 3</div> <div>Bombacacidites sp 11</div> <div>Diporites sp 3</div> <div>Diporites sp 1</div> <div>Stephanoporites sp 3</div> <div>Apiculatisporites sp</div> <div>Porocolporopollenites sp</div> <div>Peltandrapites sp</div> <div>Bombacacidites sp 6</div> <div>Verrucate trilete spore</div> <div>Liliacidites sp</div> <div>Tanaysphaeridium sp</div> <div>Tripoporollenites sp 5</div> <div>Reticulatisporites sp 1</div> <div>Polipodaceosporites sp 4</div> <div>Deltoidospora sp</div> <div>Cerodinium sp</div> <div>Bombacacidites aracuarensis</div> <div>Hystrichospheridium sp</div> <div>Paleovystodinium sp</div> <div>Classopollis sp</div> <div>Lyciliae sp 1</div> <div>Bombacacidites sp 6</div> <div>Tetracolporopollenites sp</div>																										ORGANIC MATERIAL COLOR 1 -. Pale Yellow 2 -. Yellow 3 -. Intense Yellow 4 -. Amber 5 -. Orange 6 -. Dark Orange 7 -. Brown		
N°	Sample type	Depth	1	2	3	4	5	6	7	8	9	10	11	12	13	14	15	16	17	18	19	20	21	22	23	24	25	26	All	ZONE	
1	D.S.	9060'	14	11	9	8	5	4	3	2	1	1	1	1	1														61	VI with V reworked zone	
2	D.S.	9290'-9300'		4		1		7		12		3	2	1		3	2	2	2	1	1	1	1							43	VI with V & IV reworked zone
3	D.S.	9530'		2				3		11		1				1			2	2			3	2	1	1	1	1		31	VI with V & IV reworked zone
4	D.S.	9740'		4						3		1													1					9	Undeterminable
5	D.S.	9940'		2		1		6		6									1											16	VI with V reworked zone
																													160	TOTAL	